

Pallet Standards

Minimum Grade A Stringer Pallet Standards

- **Full pallet 48" +/- .25 x 40" +/- .25"**
Partial four-way entry.
- **Half pallet 48" +/- .25 x 20" +/- .25"**
for approved programs only.
- **Quarter pallet 24" +/- .25 x 20" +/- .25"**
for approved programs only.
- Condition of the pallet is **required** to meet or exceed Grade A, 4-way, flush, and non-reversible specifications.
- Pallets are **required** to accommodate a standard pallet jack and/or forklift equipment with adequate top board spacing so forklift blades will not impact freight.
- Maximum spacing between each deck board is 4".
- Must be of sound material, free of knots.
- Pallets are **required** to have a minimum of 7 top boards and 5 bottom boards (*board minimum of 5/8" thick x 3.5" W +/- 1/8" tolerance to board thickness and widths shown.*)
- Pallets are **required** to have 3 stringers (*board minimum of 1.25" W x 3.5" H) +/- 1/8" tolerance to board thickness and widths shown.*)
- Oversized pallets are allowed only if the packaging size does not fit onto a standard 48" x 40" pallet without overhang. Oversized pallets must meet all other pallet requirements.

If only 1 dimension of your product is too large to fit on the standard 48" x 40" pallet footprint, you are allowed to grow the 40" width of the pallet to fit your product. The 48" standard pallet length and all other pallet quality standards are required to be maintained.

Odd-sized pallets are NOT ALLOWED when shipping through the Grocery Network. Product must ship on a standard 48" x 40" full pallet.

Pallet Standards

For domestic orders, the expected method of delivery into a Walmart DC is on a pallet. For direct import orders, refer to Direct Import Section of these standards. Product may be stored in a standard rack on a Supplier's pallet for an extended period of time. Pallets are **required** to support the weight of the product shipped on them.

- Grade A pallet maximum loaded weight is 2,100 lbs.
- Block pallet maximum loaded weight is 2,800 lbs.
- Staple stock items are **required** to be palletized. All other items are preferred to be palletized.
- Pallets contaminated with items not shipped on that pallet (cross-contamination) or contaminated prior to being loaded for shipment are **NOT ALLOWED**.
- **Fees or charge-backs may be assessed if pallets fail to meet Walmart's pallet requirements.**

Alternative Pallet Materials

Walmart supports the use of alternative pallet materials such as plastic, metal, etc. Approval may require proof of structural capability and/or fire rating. All standard pallets must be edge rackable. Corrugated pallets are not acceptable to ship into the Walmart DCs.

The use of non-standard size or alternative material pallets must be approved by the Walmart Inbound Quality Senior Manager via logpkg@wal-mart.com.

Wood Packaging Materials (WPM)

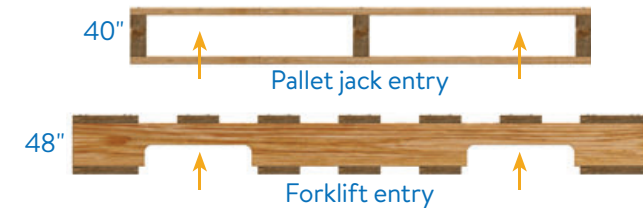
Global standards for Wood Packaging Material (WPM) address the proper treatment requirements for WPM shipped into Walmart. This document can be found on Walmart Retail Link by following the path below. Walmart supports the ISPM 15 wood packaging material requirements. All regulated wood packaging material shipped into Walmart must be properly treated by heat treatment or methyl bromide fumigation.

2,4,6 tribromophenol (TBP) is banned in the United States, Europe, and Canada. TBP is not a registered pesticide with the Environmental Protection Agency (EPA). Therefore, it is not legal for sale or use in the United States. TBP is not a recognized wood preservative by the American Wood Protection Association (AWPA).

[Retail Link > Docs > W > Wood Packaging Material Requirements](#)



Full pallet (48" x 40")



Half pallet (48" x 20")
(For approved programs only)



Quarter pallet (24" x 20")
(For approved programs only)

Pallet Standards, cont...

Stringer Wood Pallets Must Meet the Following Conditions:

- Unsecured or broken deck boards across the width of the pallet are **NOT ALLOWED**.
- Missing wood from leading edge boards greater than 1.5" diameter is **NOT ALLOWED**.
- Pallets with exposed nails outside the perimeter of the pallet are **NOT ALLOWED**.
- Raised nails greater than 1/8" on any surface of the pallet are **NOT ALLOWED**.
- Partial footings are **NOT ALLOWED**. Partial footings occur when 1/4 of the stringer board width or length that connects it to a bottom board has been removed or when securing nail shanks are exposed in the stringer.
- Tapered breaks with a depth of 1" along a 10" or greater run are **NOT ALLOWED**. (If at the 10" distance the depth is less than 1", the pallet is good. The pallet is unacceptable if the 1" depth runs the entire length of the board.)
- Stringers are preferred to be solid, unbroken, and without visible cracks on three sides longer than a 1" run. Weathering cracks that are not continuous and not visible from three sides are acceptable.
- Double stringers, patched boards, or metal repair plates are **NOT ALLOWED**.
- Pallets are not required to be bleached white but should be clean and odor free.
- Clean pallets are free of debris and stains, but discoloration due to aging is acceptable.
- Stapling, gluing, or taping PDQ displays or case layers to the pallet is **NOT ALLOWED**.
- Pallet restraining devices that penetrate trailer flooring are **NOT ALLOWED**.
- Pallets with broken, split wood and/or exposed nails are **NOT ALLOWED**. Missing or broken boards are **NOT ALLOWED**. Exposed splinters greater than 3" in length are **NOT ALLOWED**.



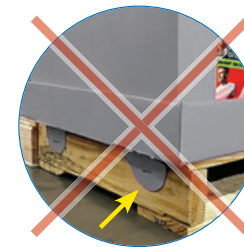
Cracks on the top or bottom boards greater than 1/8" W x 15" L are **NOT ALLOWED**.



Raised nails greater than 1/8" are **NOT ALLOWED**.



Double stringers, patched boards, or metal repair plates are **NOT ALLOWED**.



Stapling or gluing is **NOT ALLOWED**.



Pallet restraining devices that penetrate trailer flooring are **NOT ALLOWED**.

Pallet Standards, cont...

Minimum Unbranded, 9 Block Pallet Standards

- Full pallet 48" +/- .25" x 40" +/- .25" - Full four-way entry
- Hard and soft wood lumber is **required**. Plywood is **NOT ALLOWED**.
- Full perimeter bottom base is **required**.
- Must be of sound material, free of knots.

Top deck:

- Minimum 2 lead boards are **required** (40" +/- .25" L x 5.5" +/- .5" W x .5" D)
- Minimum 5 interior boards are **required** (40" +/- .25" L x 3.5" +/- .5" W x .5" D)
- Minimum 8 total top deck boards are **required**

Top stringer board:

- 3 boards are **required** (48" +/- .25" L x 3.5" +/- .5" W x 1.5" D)

Bottom perimeter deck:

- 2 lead boards are **required** (40" +/- .25" L x 5.5" +/- .5" W x .688" D)
- 3 interior boards are **required** (37" +/- .25" L x 3.5" +/- .5" W x .688" D)

Blocks:

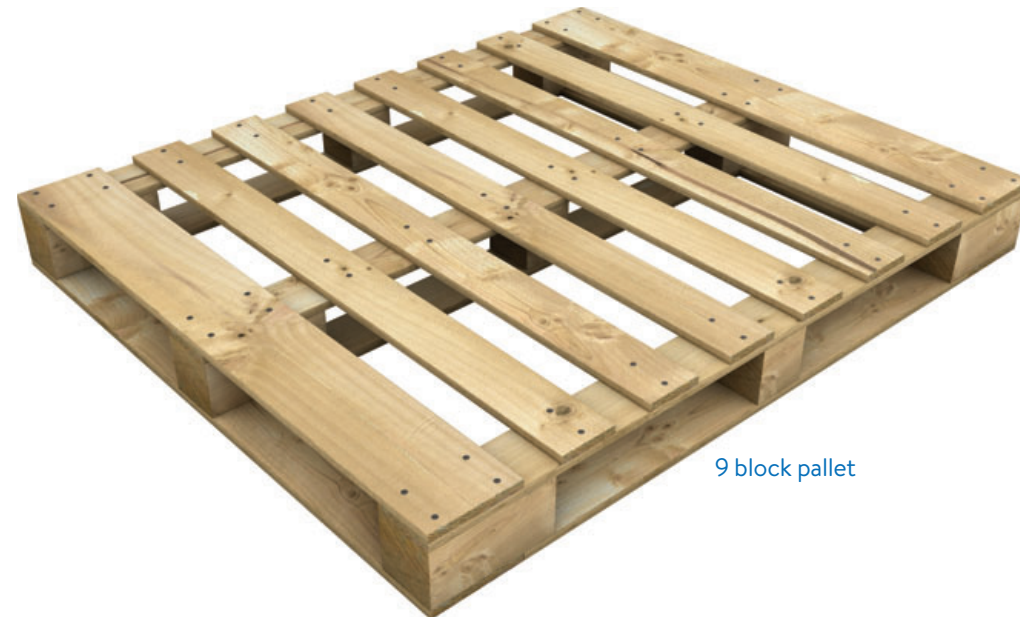
- 3 center blocks are **required** (3.5" +/- .25" L x 3.5" +/- .25" W x 3.5" +/- .25" H)
- 6 outer blocks are **required** (7.5" +/- .25" L x 3.5" +/- .25" W x 3.5" +/- .25" H)

Pallet Poolers

Walmart Suppliers have the option of leasing a pooled pallet from any number of service providers or purchasing a one-way white wood pallet. Walmart does not endorse or recommend any specific pallet manufacturer or pooling service. All pallets must meet or exceed the Grade A specifications.

Approved pallet poolers:

www.chep.com | www.pecopallet.com | www.rm2.com | www.igps.net



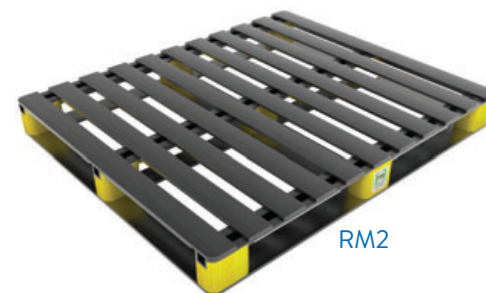
9 block pallet



CHEP



PECO



RM2



iGPS

Pallet Standards, cont...

Block Wood Pallets Must Meet the Following Conditions:

- Pallets with exposed nails outside the perimeter are **NOT ALLOWED**.
- Raised nails greater than 1/8" on any surface of the pallet are **NOT ALLOWED**.
- Pallets missing greater than 1/3 of their blocks are **NOT ALLOWED**.
- Unsecured or broken deck boards across the width are **NOT ALLOWED**.

